

200-901^{Q&As}

Developing Applications and Automating Workflows using Cisco Platforms (DEVASC)

Pass Cisco 200-901 Exam with 100% Guarantee

Free Download Real Questions & Answers **PDF** and **VCE** file from:

<https://www.leads4pass.com/200-901.html>

100% Passing Guarantee
100% Money Back Assurance

Following Questions and Answers are all new published by Cisco
Official Exam Center

- ⚙ **Instant Download** After Purchase
- ⚙ **100% Money Back** Guarantee
- ⚙ **365 Days** Free Update
- ⚙ **800,000+** Satisfied Customers



QUESTION 1

What is the main purpose of a code review?

- A. to identify and review errors with the team
- B. to detect logical errors
- C. to ensure that all code is checked in simultaneously
- D. to provide the technical lead visibility into all code

Correct Answer: A

QUESTION 2

DRAG DROP

Refer to the exhibit. Drag and drop the code snippets from the bottom onto the blanks in the Python script to retrieve a list of network devices from Cisco DNA Center. Not all options are used.

Select and Place:

```
import requests
import json
from urllib3.exceptions import InsecureRequestWarning

requests.packages.urllib3.disable_warnings()

dna_center_url = "My_DNA_Center_URL"
authentication = ("dnacenteruser", "dnacenter_password")

def get_token():
    url = "https:// " + dna_center_url + "/dna/system/api/v1/auth/token"
    response = requests.post(url, auth=authentication, verify=False)
    token = response.json()['Token']
    return token

def get_device_list():
    token = 
    url = "https:// " + dna_center_url + "dna/intent/api/v1/" + 
    header = {  : token, 'content-type' : 'application/json' }
    response = requests.get(url, headers=header)
    device_list = 
    print(json.dumps(device_list, indent=4))

if __name__ == "__main__":
    get_device_list()
```

Correct Answer:

```
import requests
import json
from urllib3.exceptions import InsecureRequestWarning

requests.packages.urllib3.disable_warnings()

dna_center_url = "My_DNA_Center_URL"
authentication = ("dnacenteruser", "dnacenter_password")

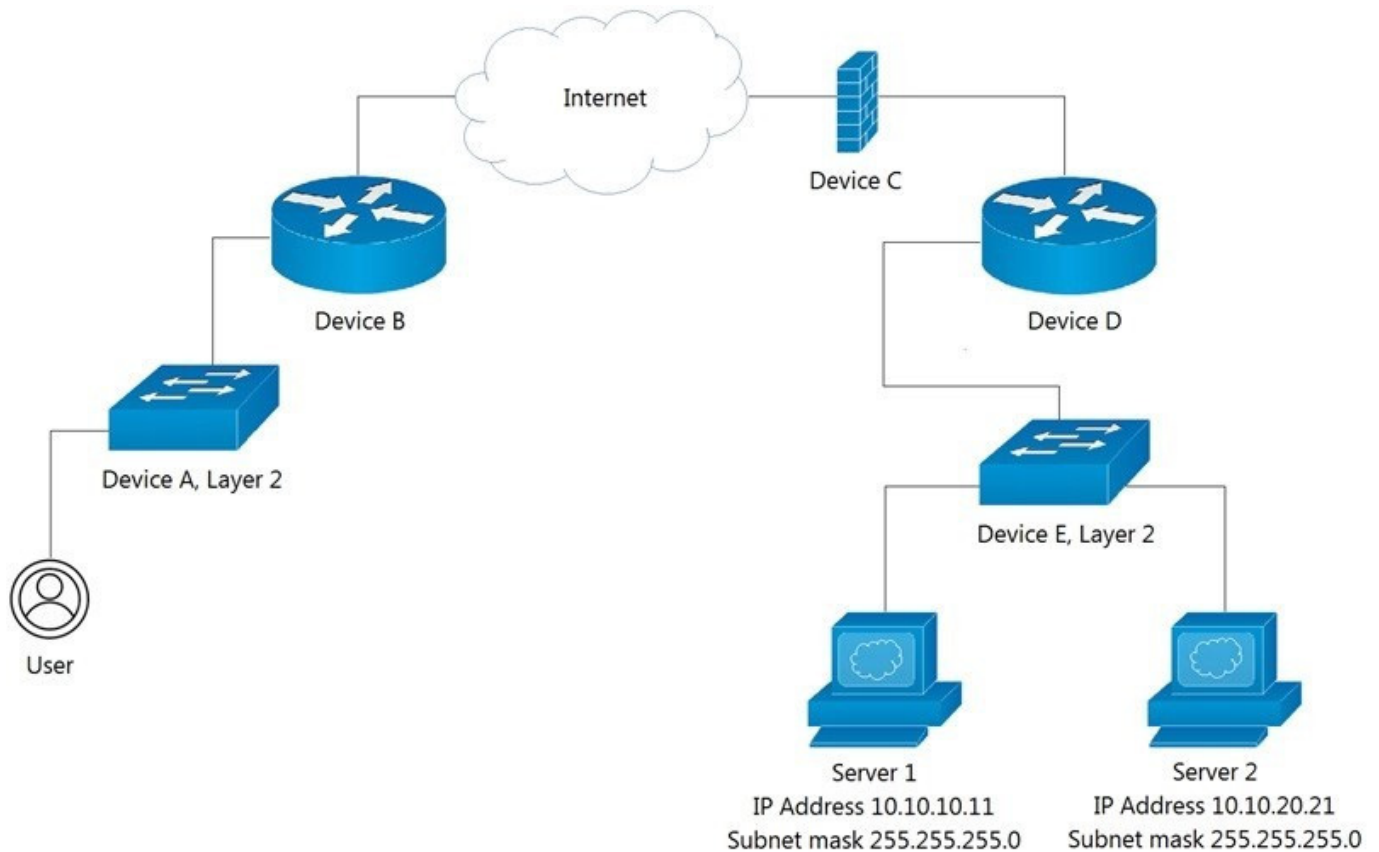
def get_token():
    url = "https:// " + dna_center_url + "/dna/system/api/v1/auth/token"
    response = requests.post(url, auth=authentication, verify=False)
    token = response.json()['Token']
    return token

def get_device_list():
    token = get_token()
    url = "https:// " + dna_center_url + "/dna/intent/api/v1/network-device"
    header = { 'x-auth-token': token, 'content-type': 'application/json' }
    response = requests.get(url, headers=header)
    device_list = response.json()
    print(json.dumps(device_list, indent=4))

if __name__ == "__main__":
    get_device_list()
```

QUESTION 3

Refer to the exhibit.



Which Device limits traffic between Server 1 and Server 2?

- A. Device B
- B. Device C
- C. Device D
- D. Device E

Correct Answer: D

The switch is the device that splits the network into multiple VLANs, thus limiting the communication. The router will route between the VLANs and enable traffic.

QUESTION 4

Which automation tool uses NEDs to abstract southbound interfaces?

- A. Chef
- B. Puppet
- C. Ansible
- D. Cisco NSO

Correct Answer: D

QUESTION 5

A new application is being developed that requires the ability to be copied and moved from one location to another. The existing infrastructure is already heavily utilized, so the new application must have a low resource footprint. The application includes a small PostgreSQL database component. Which application deployment type meets the requirements?

- A. Python virtual environment
- B. bare metal
- C. virtual machine
- D. container

Correct Answer: D

Source: <https://developer.ibm.com/articles/true-benefits-of-moving-to-containers-1/>

See "Benefit 4. Scalability and infrastructure optimization" and "Benefit 5. Component portability"

QUESTION 6

Which Cisco platform is used to manage data center infrastructure through third-party tools and system integrations?

- A. Cisco DNA Center
- B. Cisco UCS Manager
- C. Cisco Intersight
- D. Cisco UCS Director

Correct Answer: C

"Cisco Intersight infrastructure services include the deployment, monitoring, management, and support of your physical and virtual infrastructure...In addition, Cisco provides integrations to third-party operations tools, starting with ServiceNow, to allow customers to use their existing solutions more efficiently."

Reference: https://intersight.com/help/saas/getting_started/overview

QUESTION 7

Which platform has an API that has the capability to obtain a list of vulnerable software on user devices?

- A. Cisco Advanced Malware Protection

- B. Cisco Umbrella
- C. Cisco Identity Services Engine
- D. Cisco Firepower

Correct Answer: A

QUESTION 8

Which service provides a directory lookup for IP addresses and host names?

- A. DNS
- B. NAT
- C. SNMP
- D. DHCP

Correct Answer: A

QUESTION 9

Refer to the exhibit.

```
<books>
  <science>
    <biology>10.00</biology>
    <geology>9.00</geology>
  </science>
  <math>
    <calculus>20.00</calculus>
  </math>
</books>
```

Which JSON is equivalent to the XML-encoded data?

A.

```
[ {
  "books": {
    "science": {
      "biology": "10.00",
      "geology": "9.00",
    },
    "math": {
      "calculus": "20.00",
    }
  }
}]
```

B.

```
{
  "books": {
    "science": {
      "biology": "10.00",
      "geology": "9.00",
    },
    "math": {
      "calculus": "20.00",
    }
  }
}
```

C.

```
{
  "books": [
    "science": {
      "biology": "10.00",
      "geology": "9.00",
    },
    "math": {
      "calculus": "20.00",
    }
  ]
}
```

D.

```
{
  "books": [
    "science", {
      "biology": "10.00",
      "geology": "9.00",
    },
    "math", {
      "calculus": "20.00",
    }
  ]
}
```


A. Option A

B. Option B

C. Option C

D. Option D

Correct Answer: C

Reference: <https://www.guru99.com/json-vs-xml-difference.html>

QUESTION 10

Which tool is used to block all traffic to the domain by using a single API call?

A. Cisco ISE

B. Cisco Firepower

C. Cisco AMP

D. Cisco Umbrella

Correct Answer: D

KeyWord = domain

Umbrella blocks access to malicious domains, URLs, IPs, and files. The system looks at the nature of any DNS requests and takes an action based on its threat intelligence, which is a large-scale repository of historical data about threats. In turn, Umbrella is building models that classify requests so that you build on its threat intelligence. These requests can be safe and allowed, malicious and blocked, or deemed "risky" and sent to a proxy for deeper inspection.

QUESTION 11

What is a principle of test-driven development?

A. write and run tests before writing new code

B. write tests after adding new blocks of code

C. run tests after writing new code

D. write documentation for tests

Correct Answer: A

QUESTION 12

When changes are made to the same file across two branches, which git status is shown when the branches are combined?

- A. unmerged
- B. uncommitted
- C. conflict
- D. branched

Correct Answer: C

QUESTION 13

Which protocol runs over TCP port 22?

- A. SSH
- B. NETCONF
- C. HTTP
- D. Telnet

Correct Answer: A

QUESTION 14

Which Cisco platform provides organization-wide automation, security, policy enforcement, any agility across wired and wireless networks?

- A. Cisco ACI
- B. Cisco DNA Center
- C. Cisco Umbrella
- D. Cisco SD-WAN

Correct Answer: A

Cisco ACI (Application Centric Infrastructure) is a platform that provides organization-wide automation, security, policy enforcement, and agility across wired and wireless networks. Cisco ACI is a software-defined networking (SDN) solution that allows administrators to manage network resources and policies through a centralized interface, simplifying network management and enabling organizations to respond quickly to changing business needs. It provides a comprehensive set of capabilities for automating and securing networks, including policy-based automation, network segmentation, and security analytics. In the other hand, Cisco DNA Center is a network management platform that provides automation, assurance, and analytics for Cisco enterprise networks.

QUESTION 15

A developer needs to prepare the file README.md in the working tree for the next commit operation using Git. Which command needs to be used to accomplish this?

- A. git -a README.md
- B. git add README.md
- C. git add README.md staging
- D. git commit README.md

Correct Answer: B

<https://teamtreehouse.com/community/committing-the-readmemd-file-to-repository>

[200-901 PDF Dumps](#)

[200-901 Practice Test](#)

[200-901 Exam Questions](#)