

300-420^{Q&As}

Designing Cisco Enterprise Networks (ENSLD)

Pass Cisco 300-420 Exam with 100% Guarantee

Free Download Real Questions & Answers **PDF** and **VCE** file from:

<https://www.leads4pass.com/300-420.html>

100% Passing Guarantee
100% Money Back Assurance

Following Questions and Answers are all new published by Cisco
Official Exam Center

- ⚙ **Instant Download** After Purchase
- ⚙ **100% Money Back** Guarantee
- ⚙ **365 Days** Free Update
- ⚙ **800,000+** Satisfied Customers



QUESTION 1

Which component is part of the Cisco SD-Access overlay architecture?

- A. border node
- B. spine node
- C. leaf node
- D. Cisco DNA Center

Correct Answer: A

QUESTION 2

At which layer does Cisco Express Forwarding use adjacency tables to populate addressing information?

- A. Layer4
- B. Layer 2
- C. Layer 1
- D. Layer 3

Correct Answer: B

QUESTION 3

Which NETCONF operation creates filtering that is specific to the session notifications?

- A.
- B.
- C.
- D.

Correct Answer: A

QUESTION 4

A client is moving to Model-Driven Telemetry and requires periodic updates. What must the network architect consider with this design?

- A. Updates that contain changes within the data are sent only when changes occur.
- B. Empty data subscriptions do not generate empty update notifications.
- C. Periodic updates include a full copy of the data that is subscribed to.
- D. The primary push update is sent immediately and cannot be delayed.

Correct Answer: C

Periodic updates contain a full copy of the subscribed data element or table for all supported transport protocols

https://www.cisco.com/c/en/us/td/docs/ios-xml/ios/prog/configuration/166/b_166_programmability_cg/model_driven_telemetry.html

QUESTION 5

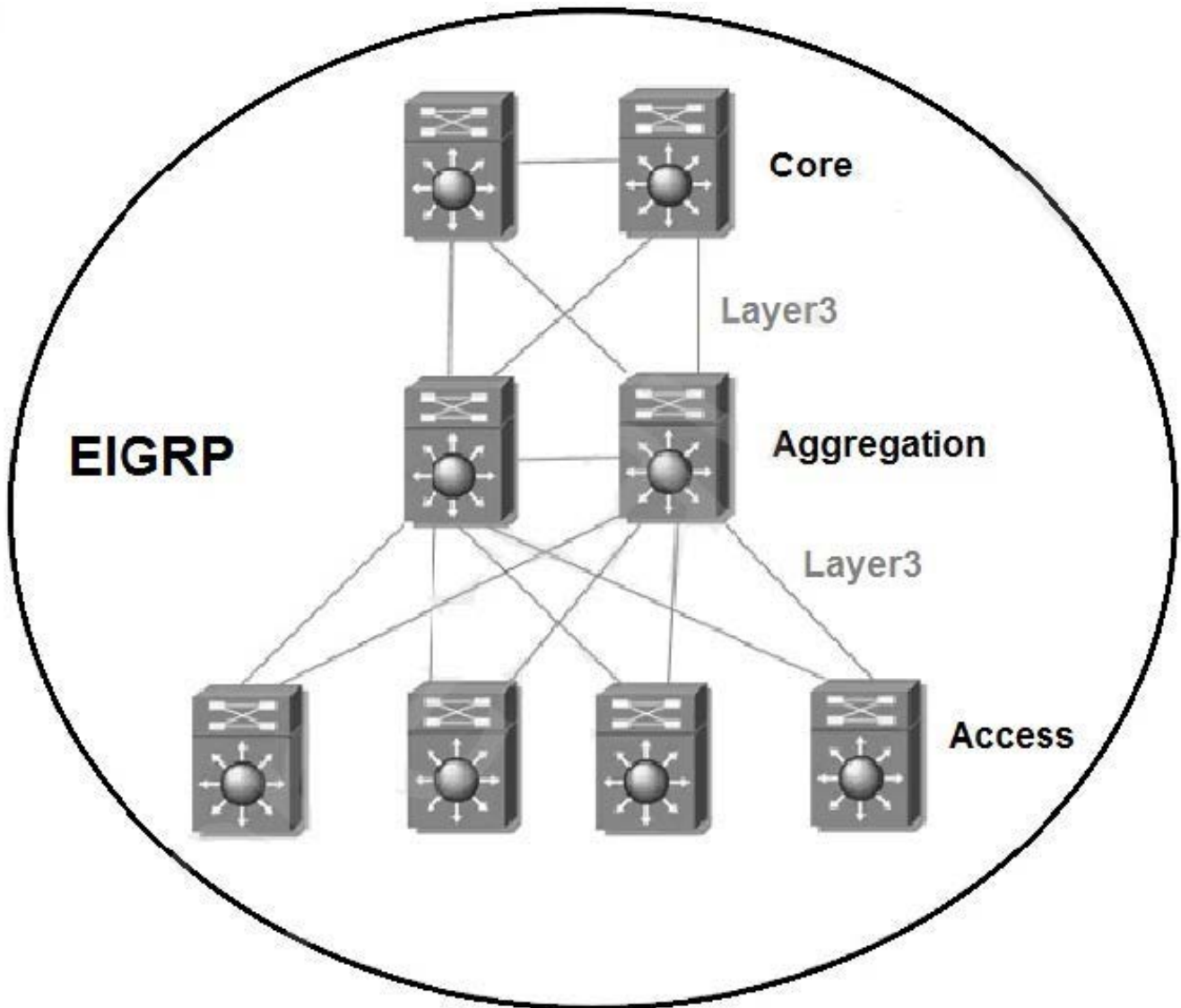
What is the purpose of the RPF check in multicast routing?

- A. to ensure that multicast packets are forwarded if they arrived on the interface used to route traffic back to the source address
- B. to ensure that multicast packets are dropped if they arrived on the interface used to route traffic to the destination address
- C. to ensure that multicast packets are forwarded if they arrived on the interface used to route traffic to the destination address
- D. to ensure that multicast packets are dropped if they arrived on the interface used to route traffic back to the source address
- E. to ensure that multicast packets, no matter the interface they arrived on, are forwarded out all interfaces

Correct Answer: A

QUESTION 6

Refer to the exhibit.



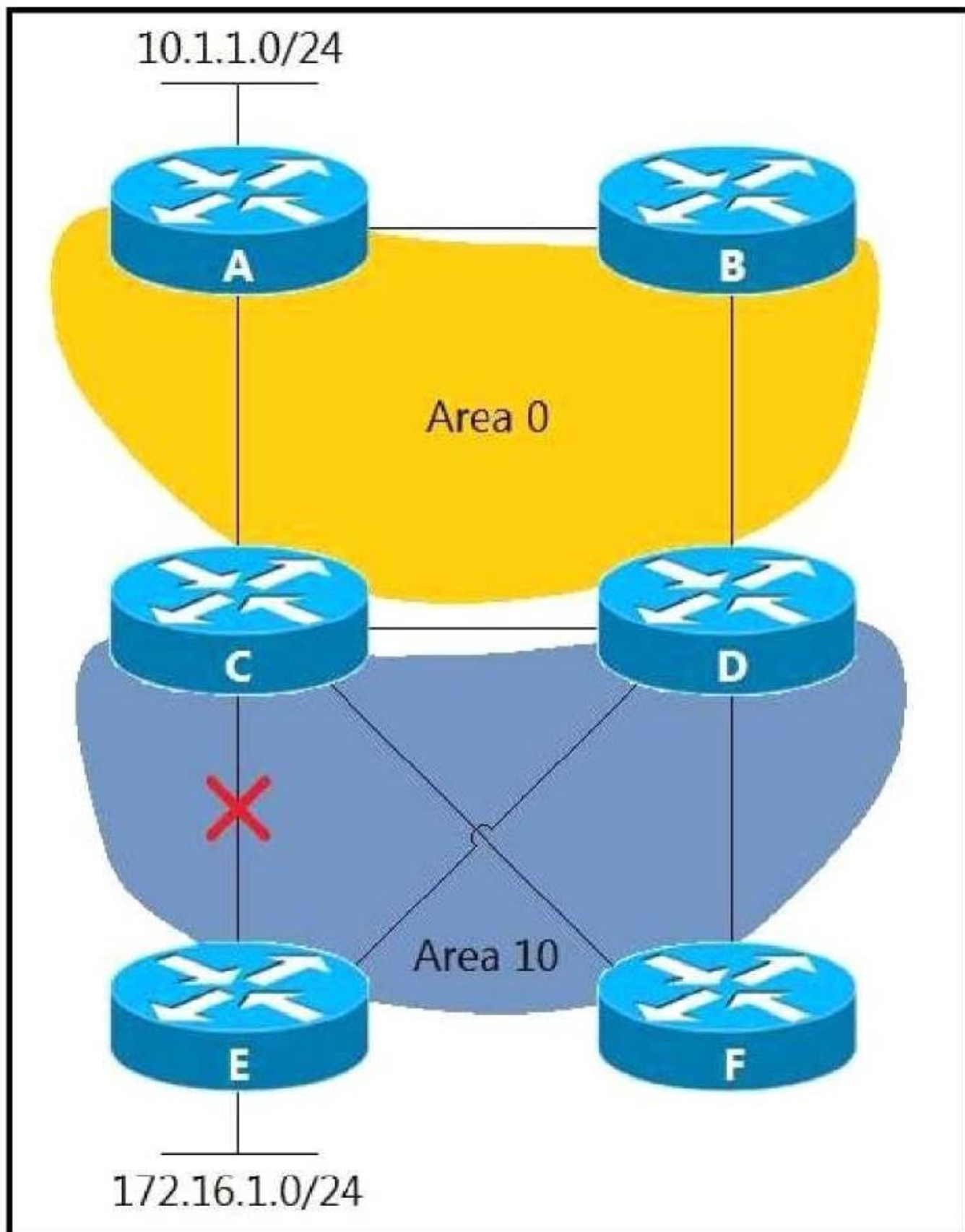
The full EIGRP routing table is advertised throughout the network. Currently, users experience data loss when any one link in the network fails. An architect must optimize the network to reduce the impact when a link fails. Which solution should the architect include in the design?

- A. Run BFD on the inter links between EIGRP neighbors.
- B. Summarize the access layer networks from each access layer switch toward the aggregation layer.
- C. Reduce the default EIGRP hello interval and hold time.
- D. Summarize the access layer networks from the aggregation layer toward the core layer.

Correct Answer: D

QUESTION 7

Refer to the exhibit. Area 10 is a regular OSPF area and networks 10.1.1.0/24 and 172.16.1.0/24 are internal. Which design provides optimal routing between both networks when the link between routers C and E fails?



- A. Move the link between routers C and D to area 10.
- B. Create an OSPF virtual link between routers E and F.
- C. Create a tunnel between routers E and F in area 10.
- D. Make area 10 a not-so-stubby area.

Correct Answer: A

QUESTION 8

Which control-plane protocol is used to map an endpoint to a location in a Cisco SD-Access network?

- A. FabricPath
- B. IS-IS
- C. LISP
- D. MP-BGP

Correct Answer: C

QUESTION 9

An engineer must propose a solution for a campus network that includes the capability to create multiple Layer 3 virtual networks. Each network must have its own addressing structure and routing table for data forwarding. The solution must be scalable to support hundreds of virtual networks and allow simple configuration and management with minimal administrative overhead. Which solution does the engineer recommend?

- A. hop-by-hop EVN
- B. multihop MPLS core
- C. multihop IPsec tunneling
- D. hop-by-hop VRF-Lite

Correct Answer: D

https://www.cisco.com/c/en/us/td/docs/solutions/Enterprise/Campus/Network_Virtualization/sccsolover.html

QUESTION 10

DRAG DROP

Drag and drop the characteristics from the left onto the correct telemetry mode on the right.

Select and Place:

The collector initiates a session to the device

supports TCP, UDP, and gRPC

The device initiates a session to the collector

supports gRPC only

Dial-In

Dial-Out

Correct Answer:

Dial-In

The collector initiates a session to the device

supports gRPC only

Dial-Out

The device initiates a session to the collector

supports TCP, UDP, and gRPC

In a dial-in mode, the destination initiates a session to the router and subscribes to data to be streamed. Dial-in mode is supported over gRPC in only 64-bit platforms

In a dial-out mode, the router initiates a session to the destinations based on the subscription. All 64-bit IOS XR platforms (except for NCS 6000 series routers) support gRPC and TCP protocols. All 32-bit IOS XR platforms support only TCP.

Reference:

https://www.cisco.com/c/en/us/td/docs/iosxr/asr9000/telemetry/b-telemetry-cg-asr9000-61x/b-telemetry-cg-asr9000-61x_chapter_010.html#id_36445

QUESTION 11

Which design consideration must be made when using IPv6 overlay tunnels?

- A. Overlay tunnels that connect isolated IPv6 networks can be considered a final IPv6 network architecture.
- B. Overlay tunnels should only be considered as a transition technique toward a permanent solution.
- C. Overlay tunnels can be configured only between border devices and require only the IPv6 protocol stack.
- D. Overlay tunneling encapsulates IPv4 packets in IPv6 packets for delivery across an IPv6 infrastructure.

Correct Answer: B

<https://www.cisco.com/c/en/us/td/docs/ios-xml/ios/interface/configuration/xr-3s/ir-xr-3s-book/ip6-ip4-gre-tunls-xr.pdf>

"The use of overlay tunnels should be considered as a transition technique toward a network that supports both the IPv4 and IPv6 protocol stacks or just the IPv6 protocol stack."

QUESTION 12

An engineer must connect a new remote site to an existing OSPF network. The new site consists of two low-end routers, one for WAN, and one for LAN. There is no demand for traffic to pass through this area. Which area type does the engineer choose to provide minimal router resource utilization, while still allowing for full connectivity to the rest of the network?

- A. not so stubby
- B. totally not so stubby
- C. totally stubby area
- D. stubby area

Correct Answer: C

QUESTION 13

An engineer must design a solution to provide backup connectivity between two sites. The engineer plans to use an Internet connection but company policy requires the connection to be encrypted.

Additionally, there are several applications that utilize multicast to deliver video streams between the sites. Which technology should the design include?

- A. GRE over IPsec
- B. IPsec direct encapsulation
- C. GETVPN

D. DMVPN

Correct Answer: A

QUESTION 14

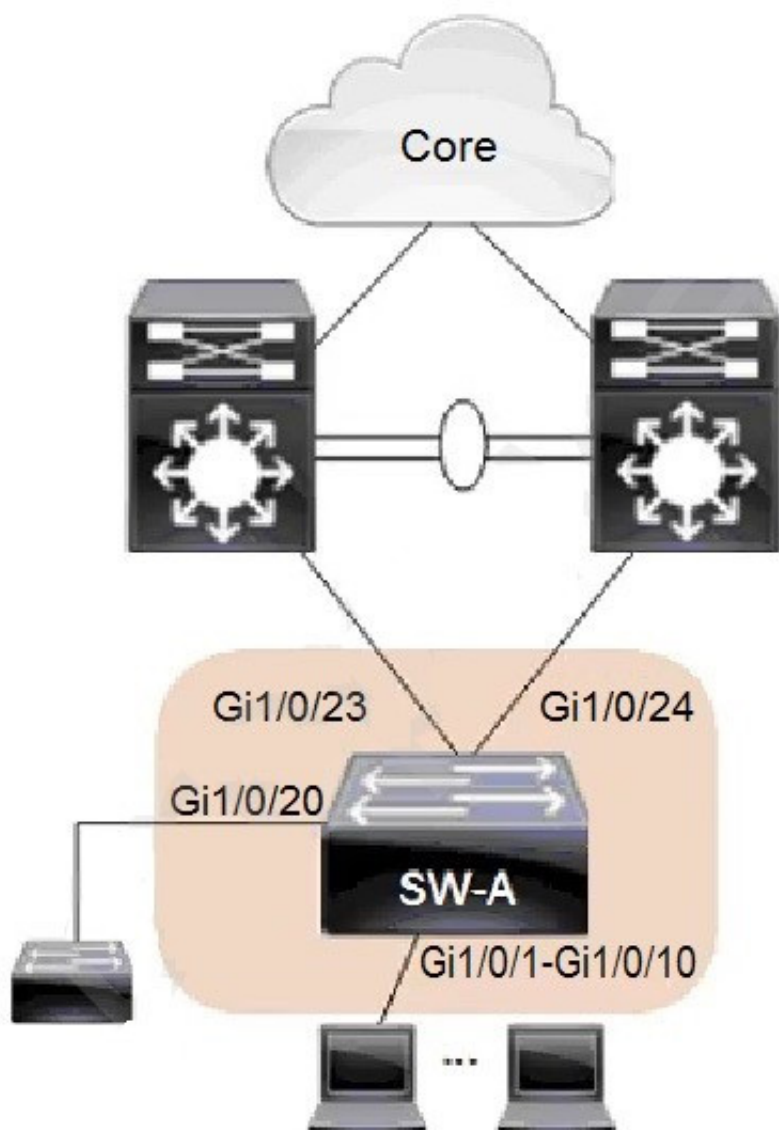
A customer requires QoS to support multimedia conferencing over MPLS. The network architect chooses to use per-hop behavior. Which solution must the architect use to classify and mark traffic traveling between branch sites?

- A. BW Queue with DSCP AF3
- B. BW Queue and DSCP WRED with DSCP AF4
- C. BW Queue and DSCP WRED with DSCP AF3
- D. BW Queue with DSCP AF4

Correct Answer: D

QUESTION 15

Refer to the exhibit. An architect reviews the low-level design of a company's enterprise network and advises optimizing the STP convergence time. Which functionality must be applied to Gi1/0/1-10 to follow the architect's recommendation?



- A. UplinkFast
- B. root guard
- C. BPDU guard
- D. PortFast

Correct Answer: D

[300-420 VCE Dumps](#)

[300-420 Practice Test](#)

[300-420 Study Guide](#)