

## 300-615<sup>Q&As</sup>

Troubleshooting Cisco Data Center Infrastructure (DCIT)

### Pass Cisco 300-615 Exam with 100% Guarantee

Free Download Real Questions & Answers **PDF** and **VCE** file from:

<https://www.leads4pass.com/300-615.html>

100% Passing Guarantee  
100% Money Back Assurance

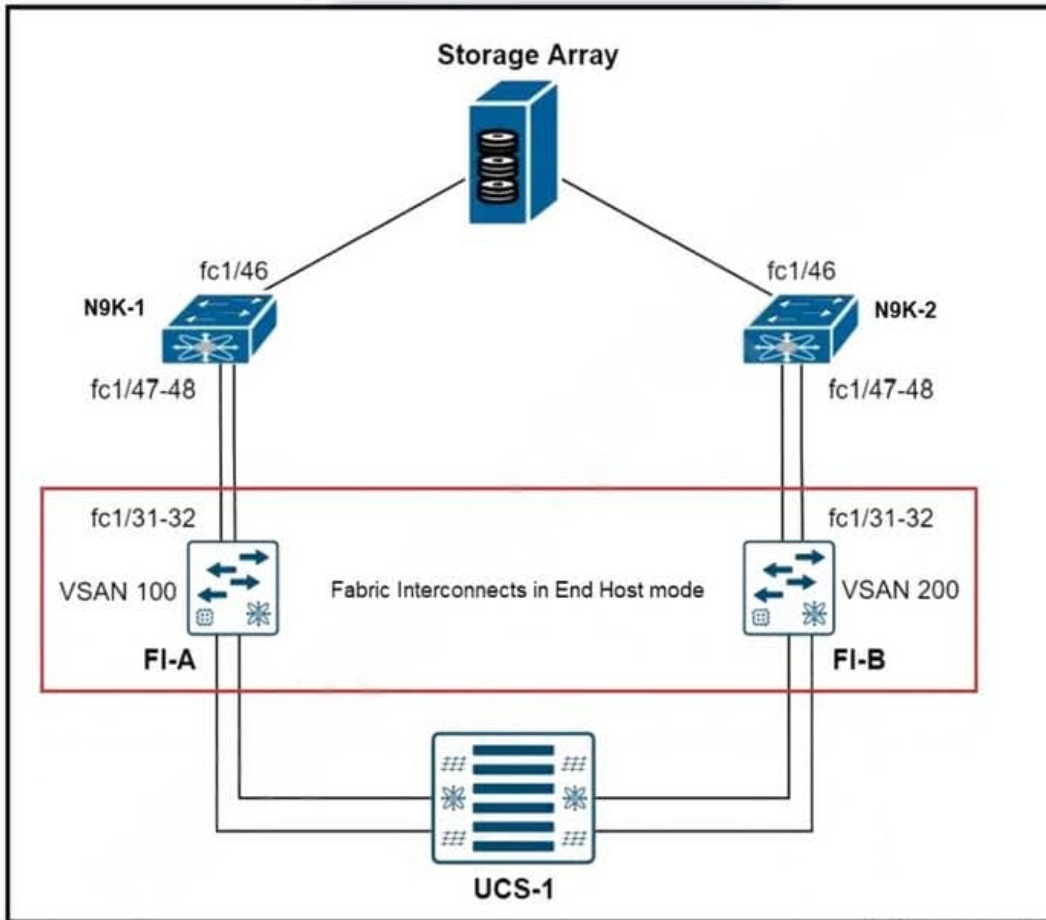
Following Questions and Answers are all new published by Cisco  
Official Exam Center

- ⚙ **Instant Download** After Purchase
- ⚙ **100% Money Back** Guarantee
- ⚙ **365 Days** Free Update
- ⚙ **800,000+** Satisfied Customers



## QUESTION 1

Refer to the exhibit.



```

N9K-1#
!
feature fcoe
slot 1
  port 44-48 type fc
!
vsan database
  vsan 100
  vsan 100 interface fc1/46-48
!
interface fc1/46-48
  no shutdown
!
  
```

```

N9K-1# show flogi database interface fc1/47-48
  
```

INTERFACE	VSAN	FCID	PORT NAME	NODE NAME
-----				

UCS-1 fails to connect to the storage array. Which action resolves the issue?

- A. Set the FI-A mode to FC End Host mode.
- B. Enable N9K-1 mode to N-Port ID Virtualization.
- C. Configure N-Port ID Virtualization on FI-A.
- D. Implement N-Port Mirtualization on N9K-1.

Correct Answer: B

---

## QUESTION 2

Refer to the exhibit.

Fault Properties

?

X

General

Troubleshooting

History

↺

↓

Fault Code: F3208

Severity: major

Last Transition: 2020-07-07T14:42:49.161+03:00

Lifecycle: Soaking

Affected Object: edm/Mgr-[UCS\_C1]-UCS\_C1

Description: Fault delegate: Connection to External Device: 172.16.105.50 with name UCS\_C1 is failing to connect with the error: [Failed to connect with Integration Manager]. Please verify network connectivity of External Device and that user credentials are valid.

Type: Communications

Cause: connect-failed

Change Set: issues (Old: , New: connection-fault)

Created: 2020-07-07T14:42:49.161+03:00

Code: F3208

Number of Occurrences: 1

Original Severity: major

Previous Severity: major

Highest Severity: major

An engineer fails to implement a Cisco UCS Manager integration manager. The credentials and IP connectivity between Cisco APIC and UCS Manager are configured as expected. Which action resolves the issue?

- A. Disable HTTP to HTTPS redirection in Cisco UCS Manager
- B. Enable JSON API on the Cisco UCS Manager
- C. Change the Integration Manager name to FQDN of the Cisco UCS Manager
- D. Install ExternalSwitch app in the APIC controller

Correct Answer: D

Reference: [https://www.cisco.com/c/en/us/td/docs/switches/datacenter/aci/apic/sw/4-x/virtualization/Cisco-ACI-Virtualization-Guide-411/Cisco-ACI-Virtualization-Guide-411\\_chapter\\_01110.html](https://www.cisco.com/c/en/us/td/docs/switches/datacenter/aci/apic/sw/4-x/virtualization/Cisco-ACI-Virtualization-Guide-411/Cisco-ACI-Virtualization-Guide-411_chapter_01110.html)

## QUESTION 3

Refer to the exhibit.

```
n7k-1# show ip ospf neighbors
OSPF Process ID 1 VRF default
Total number of neighbors: 2
Neighbor ID      Pri State           Up Time  Address      Interface
198.18.5.1       1 EXSTART/BDR       00:00:11 198.18.5.1   Eth2/1
128.0.0.3        1 FULL/BDR         01:01:04 198.18.6.2   Eth2/2
```

A network engineer configures OSPF protocol between two Cisco Nexus 7000 Series Switches. The OSPF neighbors fail to synchronize OSPF databases. Which action resolves the issue?

- A. Match the OSPF area between the two devices.
- B. Configure the IP addresses of the interface in the same subnet.
- C. Change the OSPF area type to 2 on n7k-1.
- D. Set the same MTU values on both sides of the link.

Correct Answer: D

## QUESTION 4

An engineer is implementing a storage VDC, but fails. Which two prerequisites must be in place before a storage VDC is implemented? (Choose two.)

- A. M-Series module
- B. ESSENTIALS license
- C. STORAGE-ENT license
- D. FCoE license
- E. F-Series module

Correct Answer: DE

## QUESTION 5

Refer to the exhibit.

```
switch(config)#event manager applet highcpu
switch(config-applet)#action 0.1 syslog msg High CPU DETECTED "show process cpu sort" written to bootflash:highcpu.txt
switch(config-applet)#action 0.3 cli show process cpu sort >> bootflash:highcpu.txt
switch(config-applet)#action 0.4 cli show process cpu hist >> bootflash:highcpu.txt
switch(config-applet)#action 0.6 cli show process cpu sort >> bootflash:highcpu_Core.txt
switch(config-applet)#action 0.7 cli exit
switch(config-applet)#action 0.9 cli show process cpu sort >> bootflash:highcpu_Dist.txt
switch(config-applet)#action 1.0 cli exit
```

The EEM script is applied in the default VDC to collect the outputs during high CPU utilization on the Cisco Nexus 7000 Series Switch for all VDCs. Which configuration set must be added to the script to fix the issue?

- A. switch(config-applet)# event snmp 1.3.6.1.4.1.9.9.109.1.1.1.6.1 get-type exact entry-op ge entry-val 50 poll-interval 1  
switch(config-applet)# action 0.2 cli enableswitch(config-applet)# action 0.5 cli switchto vdc Coreswitch(config-applet)# action 0.8 cli switchto vdc Distribution
- B. switch(config-applet)# event snmp 1.3.6.1.4.1.9.9.109.1.1.1.6.1 get-type exact entry-op ge entry-val 50 poll-interval 1  
switch(config-applet)# action 0.2 cli config tswitch(config-applet)# action 0.5 cli switchto vdc Coreswitch(config-applet)# action 0.8 cli switchto vdc Distribution
- C. switch(config-applet)# event snmp oid 1.3.6.1.4.1.9.9.109.1.1.1.6.1 get-type exact entry-op ge entry-val 50 poll-interval 1  
switch(config-applet)# action 0.2 cli config tswitch(config-applet)# action 0.5 cli switchto vdc Coreswitch(config-applet)# action 0.8 cli switchto vdc Distribution
- D. switch(config-applet)# event snmp oid 1.3.6.1.4.1.9.9.109.1.1.1.6.1 get-type exact entry-op ge entry-val 50 poll-interval 1  
switch(config-applet)# action 0.2 cli enableswitch(config-applet)# action 0.5 cli switchto vdc Coreswitch(config-applet)# action 0.8 cli switchto vdc Distribution

Correct Answer: D

Need exact snap shot to confirm the following.

The selection of is due to SNMP command has the key word "oid".

The command "switchto vdc Core" show run in "enable" mode, not "config t" mode.

Reference: <https://community.cisco.com/t5/networking-documents/eem-script-on-nexus-7000-switches-to-monitor-cpu-utilization/ta-p/3120112>

## QUESTION 6

Refer to the exhibit.



## SWITCH1

```
Vlan10 - Group 100 (HSRP-V1) (IPv4)
  Local state is Active, priority 110 (Cfged 110), may preempt
  Forwarding threshold(for vPC), lower: 0 upper: 110
  Hellotime 3 sec, holdtime 10 sec
  Next hello sent in 1.103000 sec(s)
  Virtual IP address is 192.168.10.254 (Cfged)
  Active router is local
  Standby router is unknown
  Authentication text "cisco"
  Virtual mac address is 0000.0c07.ac64 (Default MAC)
  2 state changes, last state change 00:00:36
  IP redundancy name is hsrp-Vlan10-100 (default)
```

## SWITCH2

```
Vlan10 - Group 10 (HSRP-V1) (IPv4)
  Local state is Active, priority 109 (Cfged 109), may preempt
  Forwarding threshold(for vPC), lower: 0 upper: 109
  Hellotime 3 sec, holdtime 10 sec
  Next hello sent in 0.822000 sec(s)
  Virtual IP address is 192.168.10.254 (Cfged)
  Active router is local
  Standby router is unknown
  Authentication text "cisco"
  Virtual mac address is 0000.0c07.ac0a (Default MAC)
  11 state changes, last state change 00:00:42
  IP redundancy name is hsrp-Vlan10-10 (default)
```

The servers experience intermittent connectivity issues in VLAN 10. Which action resolves the issue?

- A. Configure the same HSRP group on the peer switches.
- B. Enable HSRP hellos between the peer switches.
- C. Disable the preempt feature on one of the peer switches.
- D. Change the virtual IP address on one of the peer switches.

Correct Answer: A

### QUESTION 7



Refer to the exhibit.

```
n7k-1(config)# int Eth2/1
n7k-1(config-if)# vrrp 25
                        ^
% Invalid command at '^' marker.
```

An engineer fails to implement VRRP on a Cisco Nexus 7000 Series Switch. Which action resolves the issue?

- A. Activate the VRRP license.
- B. Configure the VRRP instance globally.
- C. Enable the VRRP feature.
- D. Set the VRRP group number.

Correct Answer: B

---

#### QUESTION 8

Refer to the exhibit.

```
feature scheduler
!
scheduler job name CONFIG_BACKUP
copy running-config startup-config
!
end-job
!
scheduler schedule name DAILY
  job name CONFIG_BACKUP
  time daily 02:00
```

The network administrator must use a scheduler to perform configuration backups every night. After completing the configuration, the administrator discovers that configuration backups occur at 05:15 in the morning instead of at 02:00. Which action resolves the issue?

- A. Activate the scheduler manually at 02:00 local time.
- B. Create a periodic scheduler that runs every 24 hours.
- C. Implement the switch clock to match the local time.
- D. Configure the scheduler within the CONFIG\_BACKUP job.

Correct Answer: C

---

## QUESTION 9

Refer to the exhibit.

```
vrf context management
 ip name-server 4.2.2.2
 ip route 0.0.0.0/0 192.168.30.2

interface mgmt0
 ip address dhcp
 vrf member management

N9K-Core# ping google.com vrf management
PING google.com (216.58.209.238): 56 data bytes
64 bytes from 216.58.209.238: icmp_seq=0 ttl=127 time=151.982 ms
64 bytes from 216.58.209.238: icmp_seq=1 ttl=127 time=136.198 ms
64 bytes from 216.58.209.238: icmp_seq=2 ttl=127 time=224.796 ms
64 bytes from 216.58.209.238: icmp_seq=3 ttl=127 time=148.458 ms
64 bytes from 216.58.209.238: icmp_seq=4 ttl=127 time=129.98 ms

- - - google.com ping statistics - - -
5 packets transmitted, 5 packets received, 0.00% packet loss
round-trip min/avg/max = 129.98/158.282/224.796 ms
```

A network engineer has connected the Nexus switch management port to the Internet using DHCP to allow the Guest shell running on the switch to download Python packages. The engineer can ping google.com successfully from the Nexus switch, but the Guest shell failed to download any Python packages. Which action resolves the problem?

- A. Update the Python packages on the Cisco Nexus switch directly.

- B. Manually configure DNS in the Guest shell, even if it is claimed on the Cisco Nexus switch through DHCP.
- C. Manually configure NTP in the Guest shell.
- D. Connect Guest shell to data plane interfaces to be able to connect to the networks outside the Cisco Nexus switch.

Correct Answer: B

---

#### QUESTION 10

A server administrator attempts to change the Cisco IMC KVM certificate to one signed by a private CA, but the certificate is not being accepted. What can cause this process to fail?

- A. using a certificate with a password-protected private key
- B. RSA encryption being used in the generation of the certificate.
- C. AES encryption being used in the generation of the certificate.
- D. public IP address of the Cisco IMC not being included in the SAN.

Correct Answer: A

---

#### QUESTION 11

An engineer configures role-based access control for the Cisco UCS Manager. UserA must be allowed read-only access to the system. These events occur after the system is implemented:

1.

UserA attempts to log in but receives an "Authentication Failed" message.

2.

UserB successfully logs in by using an administrator role.

3.

Both users use valid LDAP passwords.

Which action resolves the issue?

- A. Enable primary group rules for LDAP providers
- B. Assign a default role policy for remote users
- C. Add locales to the LDAP group map of UserB
- D. Set the default authentication realm to LDAP

Correct Answer: D

---

**QUESTION 12**

Refer to the exhibit.

```
Debug messages from Router-A
OSPF: Rcv DBD from 10.100.1.2 on GigabitEthernet0/1 seq 0x2124 opt 0x52 flag 0x2
      len 1452 mtu 2000 state EXSTART
OSPF: Nbr 10.100.1.2 has larger interface MTU
SPF: Send DBD to 10.100.1.2 on GigabitEthernet0/1 seq 0x9E6 opt 0x52 flag 0x7
      len 32
OSPF: Retransmitting DBD to 10.100.1.2 on GigabitEthernet0/1 [10]
OSPF: Send DBD to 10.100.1.2 on GigabitEthernet0/1 seq 0x9E6 opt 0x52 flag 0x7
      len 32
OSPF Retransmitting DBD to 10.100.1.2 on GigabitEthernet0/1[11]
%OSPF-5-ADJCHG: Process 1, Nbr 10.100.1.2 on GigabitEthernet0/1 from EXSTART to
      DOWN, Neighbor Down: Too many retransmissions

Debug messages from Router-B
OSPF: Rev DBD from 10.100.100.1 on GigabitEthernet0/1 seq 0x89E opt 0x52 flag 0x7
      len 32 mtu 1600 state EXCHANGE
OSPF: Nbr 10.100.100.1 has smaller interface MTU
```

An OSPF adjacency between Router-A and Router-B cannot reach the FULL state. Which action resolves the issue?

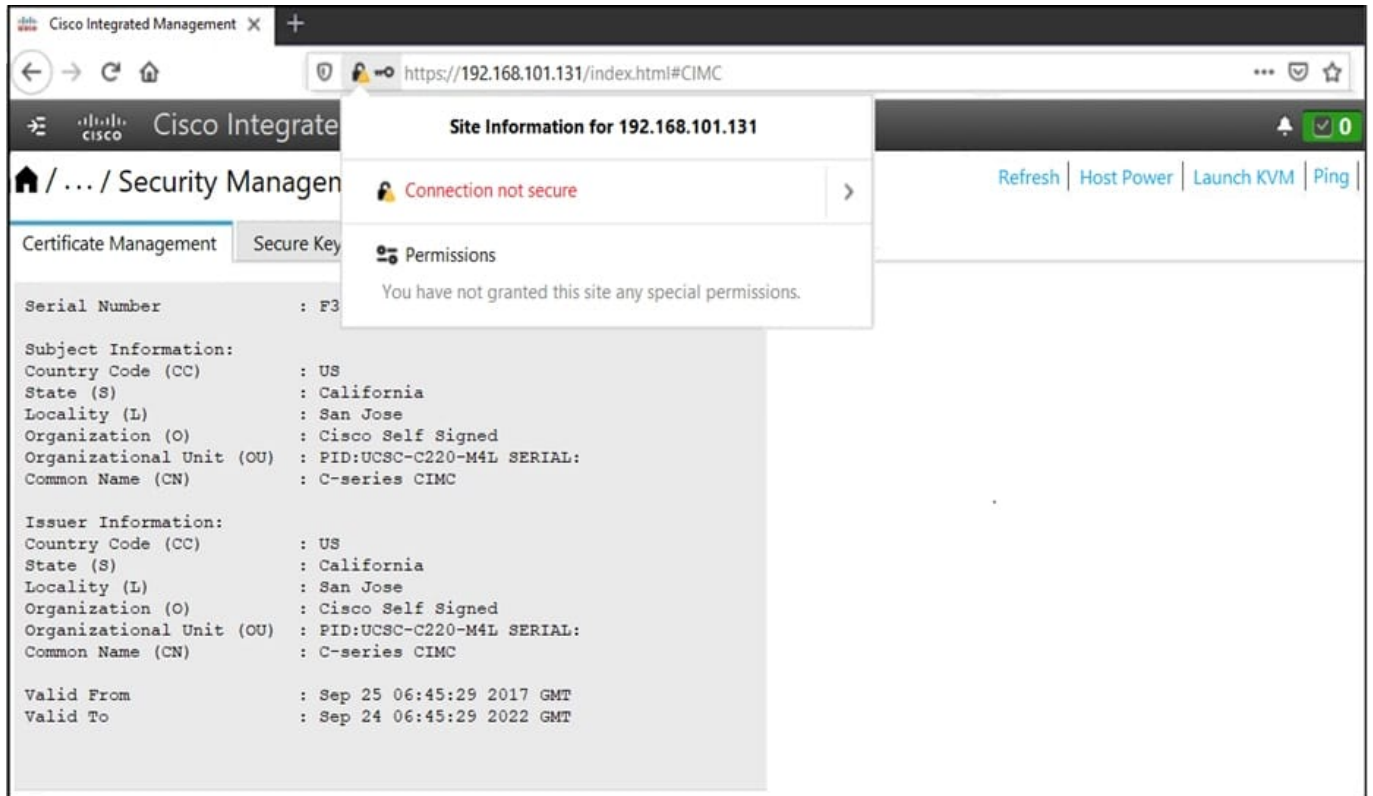
- A. Adjust the MTU on Router-A to 1600.
- B. Disable the check of the MTU value.
- C. Set the OSPF media type to point-to-point.
- D. Adjust the MTU on Router-B to 1604.

Correct Answer: B

---

**QUESTION 13**

Refer to the exhibit.



An engineer cannot log in to the Cisco IMC page of the Cisco UCS C220 server. Which action resolves the issue?

- A. Set the FQDN of the Cisco IMC webpage login page instead of the IP address for the connection to be secure.
- B. Use the DNS of the Cisco IMC webpage login page instead of the IP address for the connection to be secure.
- C. Replace the self-signed certificate that is installed on the Cisco IMC with a server certificate that is signed from the client corporate certificate.
- D. Replace the self-signed certificate that is installed on the Cisco IMC with a user certificate that is signed from the client corporate certificate.

Correct Answer: C

## QUESTION 14

Refer to the exhibit.

```
event manager applet config_monitor
event cli match "conf t"
action 1.0 snmp-trap strdata "User has entered into configuration mode"
```

The EEM script fails to send an SNMP trap when a user attempts to enter configuration mode. Which configuration is missing from the script?

- A. event statement
- B. event-default action statement
- C. policy-default action statement
- D. IP address of the SNMP server

Correct Answer: D

## QUESTION 15

Refer to the exhibit.

**Key Ring - default**

Policy | Faults | History

Name: default  
Admin State: Completed  
Description:

Certificate: -----BEGIN CERTIFICATE-----  
MIICwDCCAagCCQCQBWGNXbnWtZANBgkqhkiG9w0BAQOFADAiMQ0wCwYDVQQDDARB  
UElDMREwDwYJKoZIhvcNAQkBFgJVUzAcFw0yMDAyMjEwMTU5MzNaFw0yNTAyMTkw  
MTU5MzNaMCIXDTALBgNVBAMMBEFQSUMxETAPBgkqhkiG9w0BCQEWAlVTMIIBIjAN  
BgkqhkiG9w0BAQEFAAOCAQ8AMIIBCgKCAQEAnBJnwgQh79ri4KVwZM6FCCHw2F2g  
GfNsPxdeQjj2R17xg5qQ3OeXvCIigXWfe+eI7JK5rnBeXUFbR8zD3XMn9Ka5pqR6  
+CVppc4DfFcSKONx7ZfkW08KvqmaNC6aOMdARTiKuGMPbDBxXjrosiuu5EZxoLsZN  
J9x4sPg/Eh+SoCnUkCOcMyjEbfvES+/rDnHpnYGSRZTeM5dLJzpnk8eHOXUVV5fg  
ulXK1/sX3Fgq/mkYort0D99NCQrOp4QCY9NwTDt2R3LL+XUJPojuKrkDe19szoGv  
-----

Modulus: MOD 512 MOD 1024 MOD 1536 MOD 2048

Certificate Authority: select an option  
Private Key:

A certificate is implemented on the security configuration on the Cisco ACI controller. A customer receives a "Connection Not Secure" error in a browser every time the customer logs in to the Cisco APIC GUI. Which action resolves the issue?

- A. Add a 1536-bit key to the APIC GUI.
- B. Include a private key with the certificate.
- C. Use a browser that supports keys of 2048 bits.

D. Configure a corporate certificate authority for the certificate.

Correct Answer: D

[300-615 PDF Dumps](#)

[300-615 Practice Test](#)

[300-615 Braindumps](#)