

300-620^{Q&As}

Implementing Cisco Application Centric Infrastructure (DCACI)

Pass Cisco 300-620 Exam with 100% Guarantee

Free Download Real Questions & Answers **PDF** and **VCE** file from:

<https://www.leads4pass.com/300-620.html>

100% Passing Guarantee
100% Money Back Assurance

Following Questions and Answers are all new published by Cisco
Official Exam Center

- ⚙ **Instant Download** After Purchase
- ⚙ **100% Money Back** Guarantee
- ⚙ **365 Days** Free Update
- ⚙ **800,000+** Satisfied Customers



QUESTION 1

An endpoint called EP1 is connected to Cisco ACI compute leaf1. The engineer must replace EP1 with EP2 on the same leaf switch. Which set of actions forces all remote leaves to delete EP1 before timer expiration?

- A. Set L2 Unknown Unicast to Hardware proxy. Select Clear remote MAC entries.
- B. Set L2 Unknown Unicast to Flood. Select Clear remote MAC entries.
- C. Set L2 Unknown Unicast to Hardware Proxy. Select Clear remote IP entries.
- D. Set L2 Unknown Unicast to Flood. Select Clear remote IP entries.

Correct Answer: B

When the bridge domain has L2 Unknown Unicast set to Flood, if an endpoint is deleted the system deletes it from both the local leaf switches as well as the remote leaf switches where the bridge domain is deployed, by selecting Clear Remote MAC Entries. Without this feature, the remote leaf continues to have this endpoint learned until the timer expires. https://www.cisco.com/c/en/us/td/docs/switches/datacenter/aci/apic/sw/2-x/L2_config/b_Cisco_APIC_Layer_2_Configuration_Guide/b_Cisco_APIC_Layer_2_Configuration_Guide_chapter_010.html#:~:text=When%20the%20bridge,the%20timer%20expires.

QUESTION 2

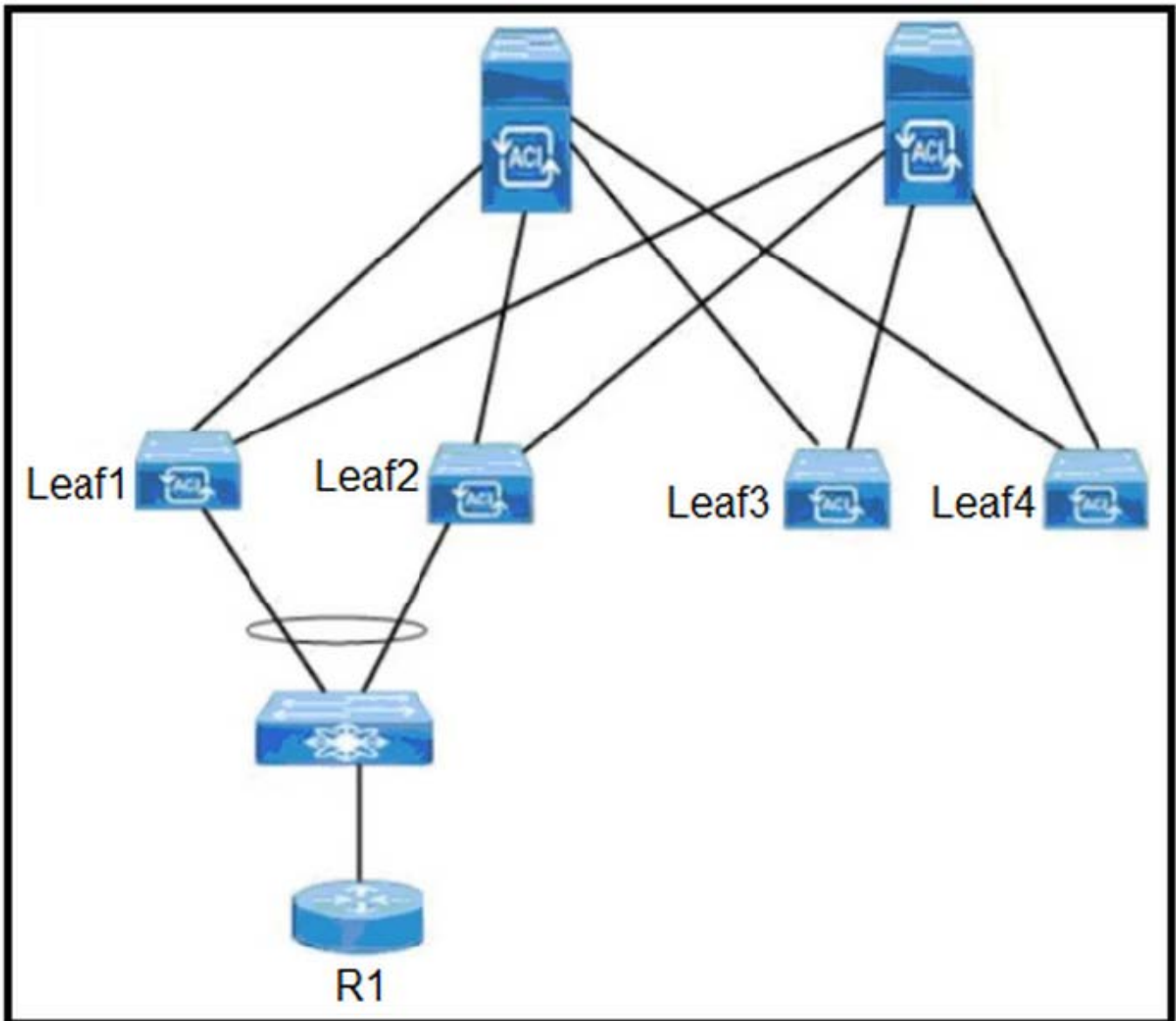
An engineer created two interface protocol policies called Pol_CDP40275332 and Pol_LLDP46783451. The policies must be used together in a single policy. Which ACI object must be used?

- A. interface policy group
- B. switch policy group
- C. switch profile
- D. interface profile

Correct Answer: A

QUESTION 3

Refer to the exhibit.



An engineer plans to upgrade the Cisco ACI fabric. Leaf1 and Leaf2 are deployed in a VPC. The fabric is peering with R1 using BGP protocol.

Which two actions upgrade the fabric nondisruptively? (Choose two.)

- A. Configure the Graceful upgrade option.
- B. Disable the BGP neighborhood between Cisco ACI fabric and R1.
- C. Enable the Graceful Insertion and Removal option.
- D. Configure one maintenance group for every leaf.
- E. Create one update group for all spines.

Correct Answer: AC

QUESTION 4

In the context of VMM, which protocol between ACI leaf and compute hosts ensures that the policies are pushed to the leaf switches for immediate and on demand resolution immediacy?

- A. VXLAN
- B. LLDP
- C. IS-IS
- D. STP

Correct Answer: B

Immediate—Specifies that EPG policies (including contracts and filters) are downloaded to the associated leaf switch software upon ESXi host attachment to a DVS. LLDP or OpFlex permissions are used to resolve the VM controller to leaf

node attachments.

The policy will be downloaded to leaf when you add host to the VMM switch. CDP/LLDP neighborship from host to leaf is required.

On Demand—Specifies that a policy (for example, VLAN, VXLAN bindings, contracts, or filters) is pushed to the leaf node only when an ESXi host is attached to a DVS and a VM is placed in the port group (EPG).

The policy will be downloaded to leaf when host is added to VMM switch and virtual machine needs to be placed into port group (EPG). CDP/LLDP neighborship from host to leaf is required.

With both immediate and on demand, if host and leaf lose LLDP/CDP neighborship the policies are removed.

https://www.cisco.com/c/en/us/td/docs/switches/datacenter/aci/apic/sw/1-x/aci-fundamentals/b_ACI-Fundamentals/b_ACI-Fundamentals_chapter_01011.html

QUESTION 5

A Cisco ACI fabric is integrated with VMware VDS. The fabric must apply a security policy to check the integrity of traffic out of the network adapter. Which action must be taken to drop the packet when the ESXi host discovers a mismatch between the actual source MAC address transmitted by the guest operating system and the effective MAC address of the virtual machine adapter?

- A. Reject MAC changes.
- B. Reject forged transmits.
- C. Accept MAC changes.
- D. Accept forged transmits.

Correct Answer: B

QUESTION 6

DRAG DROP

An engineer must configure VMM domain integration on a Cisco UCS B-Series server that is connected to a Cisco ACI fabric. Drag and drop the products used to create VMM domain from the bottom into the sequence in which they should be implemented at the top. Products are used more than once.

Select and Place:

On the interface, create a dynamic VLAN pool.
 On the interface, create a VMware vCenter domain.
 On the interface, create a vCenter/vShield controller.
 On the user interface, verify that the VMware vDS is created.

APIC

vCenter

UCS Manager

Correct Answer:

On the interface, create a dynamic VLAN pool.
 On the interface, create a VMware vCenter domain.
 On the interface, create a vCenter/vShield controller.
 On the user interface, verify that the VMware vDS is created.

APIC

vCenter

UCS Manager

QUESTION 7

An engineer must deploy Cisco ACI across 10 geographically separated data centers. Which ACI site deployment feature enables the engineer to control which bridge domains contain Layer 2 flooding?

- A. GOLF
- B. Multi-Site
- C. Multi-Pod
- D. Stretched Fabric

Correct Answer: B

QUESTION 8

Refer to the exhibit.



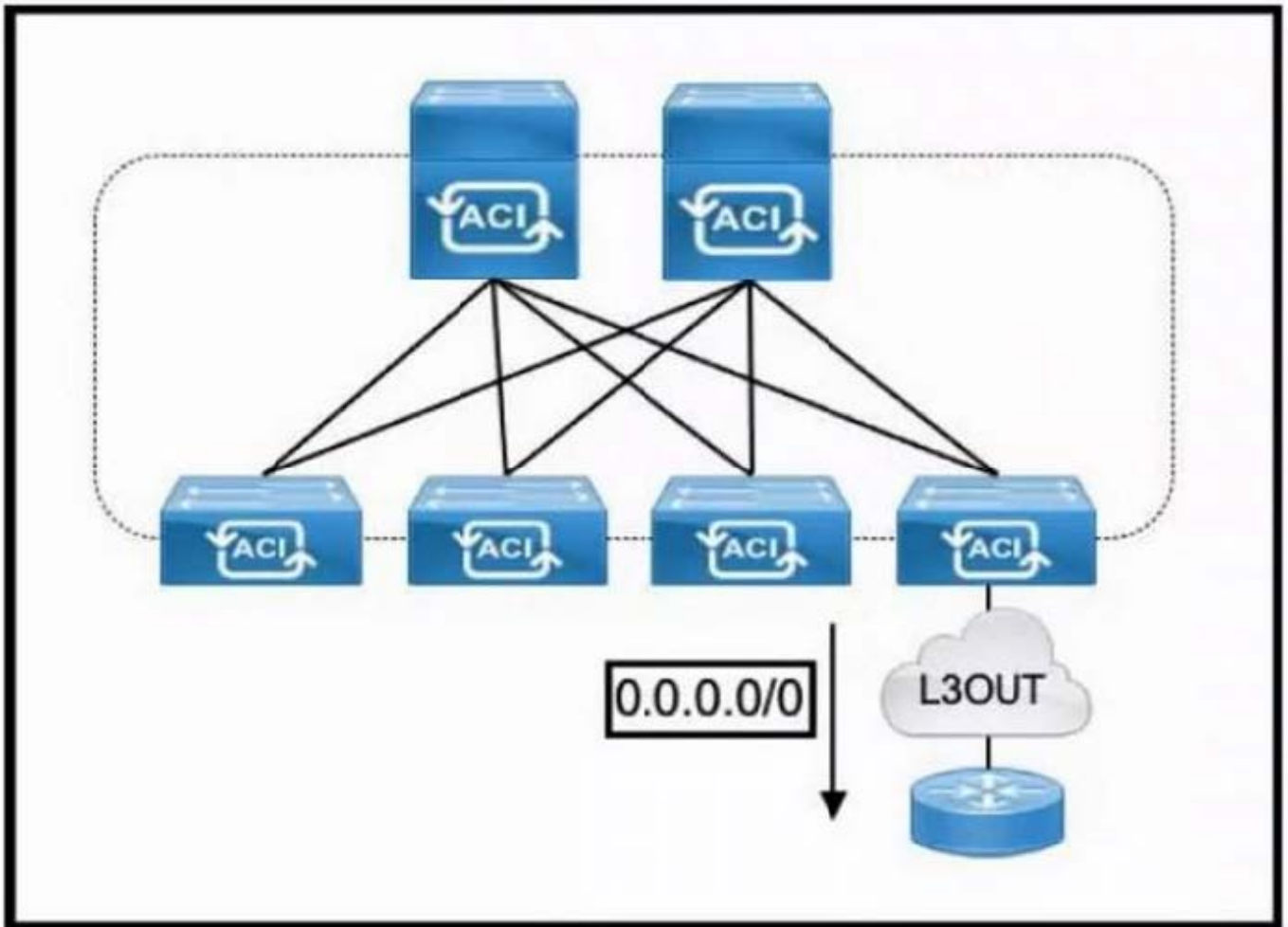
A Cisco APIC raises this fault when connectivity for EPG-3 is configured. Which action clears the fault?

- A. Associate BD-3 to VRF-1.
- B. Implement a domain for EPG-3.
- C. Configure a subnet on BD-3.
- D. Create BD-3 for EPG-3.

Correct Answer: D

QUESTION 9

Refer to the exhibit.



The default route is not present in the routing tables of the Cisco ACI leaf switches. All static and direct routes are currently being redistributed and advertised. Which action must be taken to advertise a default route on the eBGP L3Out?

- A. Enable a BGP peer prefix policy set to Always.
- B. Configure a static default route on the ACI node profiles with next-hop null.
- C. Create a Default Route Leak Policy on the L3Out.
- D. Implement an export route map matching 0.0.0.0/0.

Correct Answer: C

There are two methods to advertise a default route (0.0.0.0/0) from BGP L3Out to the outside.

1.

Transit Routing

2.

Default Route Leak Policy

QUESTION 10

Refer to the exhibit.

Create vCenter Domain

vCenter Credentials:

Profile name	Username	Description
Lab-VCenter	admin	

vCenter:

Name	IP	Type	Stats Collection
Lab-VCenter	vcenter.aci.lab	vCenter	Disabled

Port Channel Mode:

select a value

Static Channel – Mode On
LACP Active
LACP Passive
MAC Pinning+
MAC Pinning-Physical-NIC-load

Cancel
Submit

An engineer is implementing Cisco ACI VMware vCenter integration for a blade server that lacks support of bonding. Which port channel mode results in "route based on originating virtual port" on the VMware VDS?

- A. Static Channel ?Mode On
- B. MAC Pinning-Physical-NIC-load
- C. LACP Passive
- D. MAC Pinning+
- E. LACP Active

Correct Answer: D

<https://www.cisco.com/c/en/us/td/docs/dcn/aci/apic/6x/virtualization/cisco-aci-virtualization-guide-60x/ACI-Virtualization-Guide-60x-aci-with-vmware-vds.pdf>

QUESTION 11

An ACI engineer is implementing a Layer 3 Out inside the Cisco ACI fabric that must meet these requirements:

- 1.

The data center core switch must be connected to one of the leaf switches with a single 1G link.

2.

The routes must be exchanged using a link-state routing protocol that supports hierarchical network design.

3.

The data center core switch interface must be using 802.1Q tagging, and each VLAN will be configured with a dedicated IP address.

Which set of steps accomplishes this goals?

A. Set up the EIGRP Protocol policy with the selected Autonomous System number. Create the Routed Outside object and Node Profile, selecting EIGRP. Configure the Interface profile, selecting Routed Interface and the appropriate interfaces. Create the External Network object with a network of 0.0.0 0/0.

B. Set up the EIGRP Protocol policy with the selected Autonomous System number. Set up the Routed External Network object and Node Profile, selecting EIGRP. Create the Switch profile, selecting Port-channel and the appropriate interfaces. Create the default network and associate it with the Routed Outside object.

C. Set up the BGP Protocol policy with the Autonomous System number of 0. Configure an Interface policy and an External Bridged Domain. Create an External Bridged Network using the configured VLAN pool. Build the Leaf profile, selecting Routed sub-interface and the appropriate VLAN.

D. Configure the OSPF Protocol policy with an area of 0. Create Routed Outside object and Node Profile, selecting OSPF as the routing protocol. Build the Interface profile, selecting Routed Sub-interface and the appropriate VLAN. Configure the External Network object with a network of 0 0.0 0/0.

Correct Answer: D

QUESTION 12

The unicast routing feature is enabled on the bridge domain. Which two conditions enable the Cisco ACI leaf to learn a source IP as a local endpoint? (Choose two.)

A. Through Ethernet traffic received in a bridge domain.

B. IP traffic routed through an SVI.

C. Through VXLAN traffic received on the uplink.

D. IP traffic routed through a Layer 3 Out.

E. Through ARP received on an SVI.

Correct Answer: BE

QUESTION 13

An engineer is implementing an out-of-band (OOB) management access for the Cisco ACI fabric. The secure access

must meet these requirements:

Only GUI and secure shell must be allowed to access the management interfaces of the ACIs.

The only IP ranges that must be permitted to connect the fabric will be 10.10.10.0/24 and 192.168.15.0/24.

Which configuration set meets these requirements?

- A. Implement HTTPS and SSH protocol filters in the OOB contract. Add the required subnets to the external network instance profile.
- B. Set up static IPs on the management interfaces from the required IP range. Add the required subnets to the external network instance profile.
- C. Create an out-of-band EPG in the external management entity. Associate the management profile with the OOB contract.
- D. Create an out-of-band EPG in the common tenant. Associate the external network instance profile with the OOB contract.

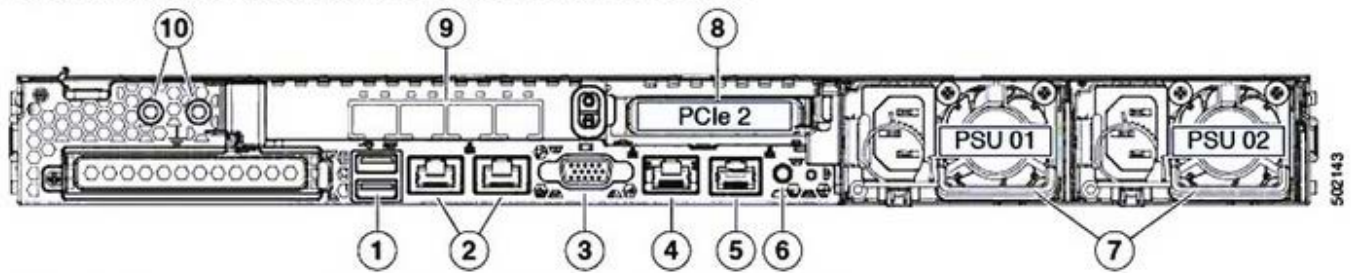
Correct Answer: A

Tenants > mgmt > Contracts > Out Of Band Contracts, apply in provided direction to Node Management EPG Tenants > mgmt > External Management Network Instance Profiles -> apply the contract in consumed direction and add subnets Make sure HTTPS and SSH are enabled in Fabric > Fabric Policies > Policies > Pod > Management Access

QUESTION 14

Refer to the exhibit.

Figure 2. Connection Features on a Third-Generation APIC Controller



- | | |
|----|--|
| 1 | USB 3.0 ports (two) |
| 2 | Dual 1-Gb/10-Gb Ethernet ports (LAN1 and LAN2)
The dual LAN ports can support 1 Gbps and 10 Gbps, depending on the link partner capability. |
| 3 | VGA video port (DB-15 connector) |
| 4 | 1-Gb Ethernet dedicated management port |
| 5 | Serial port (RJ-45 connector) |
| 6 | Rear unit identification button/LED |
| 7 | Power supplies (two, redundant as 1+1) |
| 8 | PCIe riser 1/slot 1 (x16 lane) |
| 9 | VIC 1455 with external 10/25-Gigabit Ethernet ports (4) |
| 10 | Threaded holes for dual-hole grounding lug |

<... output omitted ...>

Out-of-band management configuration ...

Enable IPv6 for Out of Band Mgmt Interface? [N]:

Enter the IPv4 address [192.168.10.1/24]: 172.23.142.29/21

Enter the IPv4 address of the default gateway [None]: 172.23.136.1

Enter the interface speed/duplex mode [auto]:

admin user configuration ...

Enable strong passwords? [Y]:

Enter the password for admin: C4SCO376AB984AA9

<... output omitted ...>

A network engineer deploys Cisco APIC for the first time. Which connectivity type must be used to connect a Cisco ACI APIC node to connect to an out-of-band segment?

- A. 4. 1-Gb Ethernet dedicated management port
- B. 5. Serial port (RJ-45 connector)
- C. 9. VIC 1455 with external 10/25-Gigabit Ethernet ports
- D. 2. Dual 1-Gb/10-Gb Ethernet ports (LAN1 and LAN2)

Correct Answer: D

Out-of-band 1-Gb/10-Gb Ethernet management ports for management of APIC OS only

QUESTION 15

Refer to the exhibit.

ID: 4295457803
Description: Failed to form relation to MO qosdpppol-default of class qosDppPol in context
Severity: cleared
Affected Object: uni/tn-Raccoon_City/out-L3Out_Demo/lnodep-L3Out_Demo_nodeProfile/lifp-L3Out_Demo_interfaceProfile/rsingressQosDppPol
Delegated From:
Created: 2021-02-05T19:29:08.730+00:00
Code: F2044
Type: Config
Cause: resolution-failed
Change Set: state (Old: missing-target, New: formed), tDn (Old: , New: uni/tn-common/qosdpppol-default)
Action: modification
Domain: Infra
Life Cycle: Retaining
Count Fault Occurred: 1
Acknowledgement Status: false

An engineer configures an L3Out but receives the error presented. Which action clears the fault?

- A. Acknowledge the QoS-related error.
- B. Associate a custom QoS class.
- C. Create a custom QoS policy.
- D. Set the QoS policy to Level 3.

Correct Answer: A

Because performing those actions will prevent the fault from appearing again in the future, but will not clear the fault that is already present.

[300-620 PDF Dumps](#)

[300-620 Practice Test](#)

[300-620 Braindumps](#)