

350-501^{Q&As}

Implementing and Operating Cisco Service Provider Network Core Technologies (SPCOR)

Pass Cisco 350-501 Exam with 100% Guarantee

Free Download Real Questions & Answers **PDF** and **VCE** file from:

<https://www.leads4pass.com/350-501.html>

100% Passing Guarantee
100% Money Back Assurance

Following Questions and Answers are all new published by Cisco
Official Exam Center

- ⚙ **Instant Download** After Purchase
- ⚙ **100% Money Back** Guarantee
- ⚙ **365 Days** Free Update
- ⚙ **800,000+** Satisfied Customers



QUESTION 1

Refer to the exhibit.

```
R1# configure terminal
R1(config)# router isis area2
R1(config-router)# metric-style wide level-1
```

An engineer is configuring multipoint-to-multipoint IS-IS for IPv6 on router R1. Which additional configuration must be applied to the router to complete the task?

- A. R1# configure terminal R1(config)# router isis area2 R1(config-router)# address-family ipv6 R1(config-router-af)# multi-topology Most Voted
- B. R1# configure terminal R1(config)# router isis area1 R1(config-router)# metric-style wide level-2 R1(config-router)# address-family ipv6 R1(config-router-af)# multi-topology
- C. R1# configure terminal R1(config)# router isis area2 R1(config-router)# metric-style wide R1(config-router)# address-family ipv6 R1(config-router-af)# multi topology
- D. R1# configure terminal R1(config)# router isis area1 R1(config-router)# metric-style wide level-1 R1(config-router)# address-family ipv6 R1(config-router-af)# multi topology

Correct Answer: A

QUESTION 2

Refer to the exhibit.

```
POST http://192.168.1.1 api/changeSelfPassword.json

{
  "aaaChangePassword" : {
    "attributes" : {
      "userName" : "ciscotest",
      "oldPassword" : "s@nfr@nc1sc0",
      "newPassword" : "s@nfr@nc1sco"
    }
  }
}
```

What is the purpose of this JSON script?

- A. It changes the existing password.
- B. It updates a user authentication record.
- C. It deletes a user's authentication record.
- D. It confirms a user's login credentials.

Correct Answer: A

QUESTION 3

DRAG DROP

Drag and drop the multicast concepts from the left onto the correct descriptions on the right.

Select and Place:

Answer Area

IGMP	multicast routing protocol that floods traffic to all peers
PIM-DM	technology that manages the process of joining and leaving multicast groups
PIM-SM	technology that requires an RP
shared tree	technology that uses the RP as the single common root
source tree	shortest-path tree

Correct Answer:

Answer Area

PIM-DM
IGMP
shared tree
PIM-SM
source tree

QUESTION 4

Which three OSPF parameters must match before two devices can establish an OSPF adjacency? (Choose three.)

- A. IP address
- B. subnet mask
- C. interface cost
- D. process ID
- E. area number
- F. hello timer setting

Correct Answer: BEF

QUESTION 5

Refer to the exhibit

CE1#

```
interface FastEthernet/0/0/1
description **** HUB CE non router ****
ip address 10.0.12.1 255.255.255.0

router ospf 100
log-adjacency-changes
network 10.0.12.0 0.0.255.255 area 0
```

CE2#

```
interface Serial0/0/9
description **** SPOKE CE router ****
encapsulation ppp
ip address 10.0.12.12 255.255.255.0

router ospf 100
log-adjacency-changes
network 10.0.12.0 0.0.255.255 area 0
```

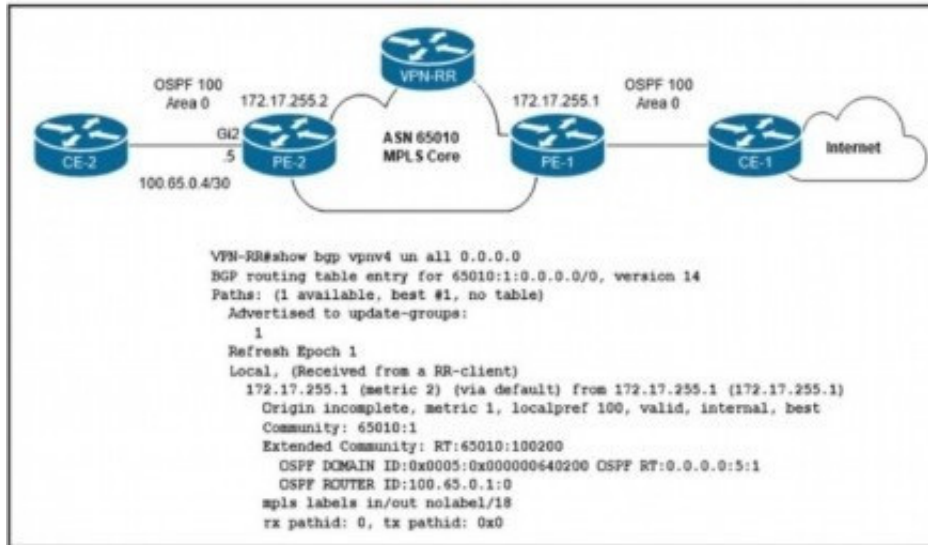
A network engineer is configuring customer edge routers to finalize a L2VPN over MPLS deployment. Assume that the AToM L2VPN service that connects the two CEs is configured correctly on the service provider network. Which action causes the solution to fail?

- A. OSPF does not work with L2VPN services.
- B. The routing protocol network types are not compatible.
- C. A loopback with a /32 IP address has not been used.
- D. The xconnect statement has not been defined.

Correct Answer: B

QUESTION 6

Refer to the exhibit.



The network engineer who manages ASN 65010 is provisioning a customer VRF named CUSTOMER-ABC on PE-2. The PE-CE routing protocol is OSPF Internet reachability is available via the OSPF 0 0 0.0/0 route advertised by CE-1 to PE-1 In the customer VRF

Which configuration must the network engineer Implement on PE-2 so that CE-2 has connectivity to the Internet?

- A.
- ```

vrf definition CUSTOMER-ABC
rd 65010:1
address-family ipv4
route-target both 65010:1
!
router ospf 100 vrf CUSTOMER-ABC
network 100.65.0.4 0.0.0.3 area 0
redistribute bgp 65010 subnets
default-information originate
!
router bgp 65010
address-family ipv4 unicast vrf CUSTOMER-ABC
redistribute ospf 100 match internal external

```
- B.
- ```

vrf definition CUSTOMER-ABC
rd 65010:2
address-family ipv4
route-target both 65010:100200
!
router ospf 100 vrf CUSTOMER-ABC
network 100.65.0.4 0.0.0.3 area 0
redistribute bgp 65010 subnets
!
router bgp 65010
address-family ipv4 unicast vrf CUSTOMER-ABC
redistribute ospf 100 match internal external
    
```
- C.
- ```

vrf definition CUSTOMER-ABC
rd 65010:1
address-family ipv4
route-target both 65010:100200
!
router ospf 100 vrf CUSTOMER-ABC
network 100.65.0.4 0.0.0.3 area 0
redistribute bgp 65010 subnets
default-information originate
!
router bgp 65010
address-family ipv4 unicast vrf CUSTOMER-ABC
redistribute ospf 100 match internal external

```
- D.
- ```

vrf definition CUSTOMER-ABC
rd 65010:2
address-family ipv4
route-target both 65010:1
!
router ospf 100 vrf CUSTOMER-ABC
network 100.65.0.4 0.0.0.3 area 0
redistribute bgp 65010 subnets
!
router bgp 65010
address-family ipv4 unicast vrf CUSTOMER-ABC
redistribute ospf 100 match internal external
    
```


A. Option A

B. Option B

C. Option C

D. Option D

Correct Answer: C

QUESTION 7

A new PE router is configured to run OSPF as an IGP with LDP on all interfaces. The engineer is trying to prevent black holes after convergence when the PERSON device loses an LDP session with other PE routers. Which action must the engineer take to implement LDP session protection on a new PE router?

A. Configure the mpls ldp session protection and mpls label protocol ldp commands on the interfaces on the new PE router that connect to the CENTER routers.

B. Configure the mpls ldp discovery targeted-hello accept and mpls ldp session protection commands on the interfaces on the new PE router that connect to the CE routers.

C. Configure the new PE router with the mpls ldp session protection command and on neighboring routers that connect to this new PE router.

D. Configure the new PE router with the mpls ldp session protection command on interfaces with directly connected neighbors.

Correct Answer: C

QUESTION 8

Which configuration enables BGP FlowSpec client function and installation of policies on all local interfaces?

A. flowspec address-family ipv4

local-install interface-all

B. flowspec address-family ipv4 install interface-all local

C. flowspec address-family ipv4 install interface-all

D. flowspec address-family ipv4 local-install all-interface

Correct Answer: A

Reference: https://www.cisco.com/c/en/us/td/docs/ios-xml/ios/iproute_bgp/configuration/xr-16-6/irg-xr-16-6-book/C3PL-BGP-Flowspec-Client.html

QUESTION 9

Refer to the exhibit.

```
line vty 0 4
  access-class 100 in
  transport input ssh
  login local
line vty 5 15
  access-class 100 in
  transport input ssh
  login local
```

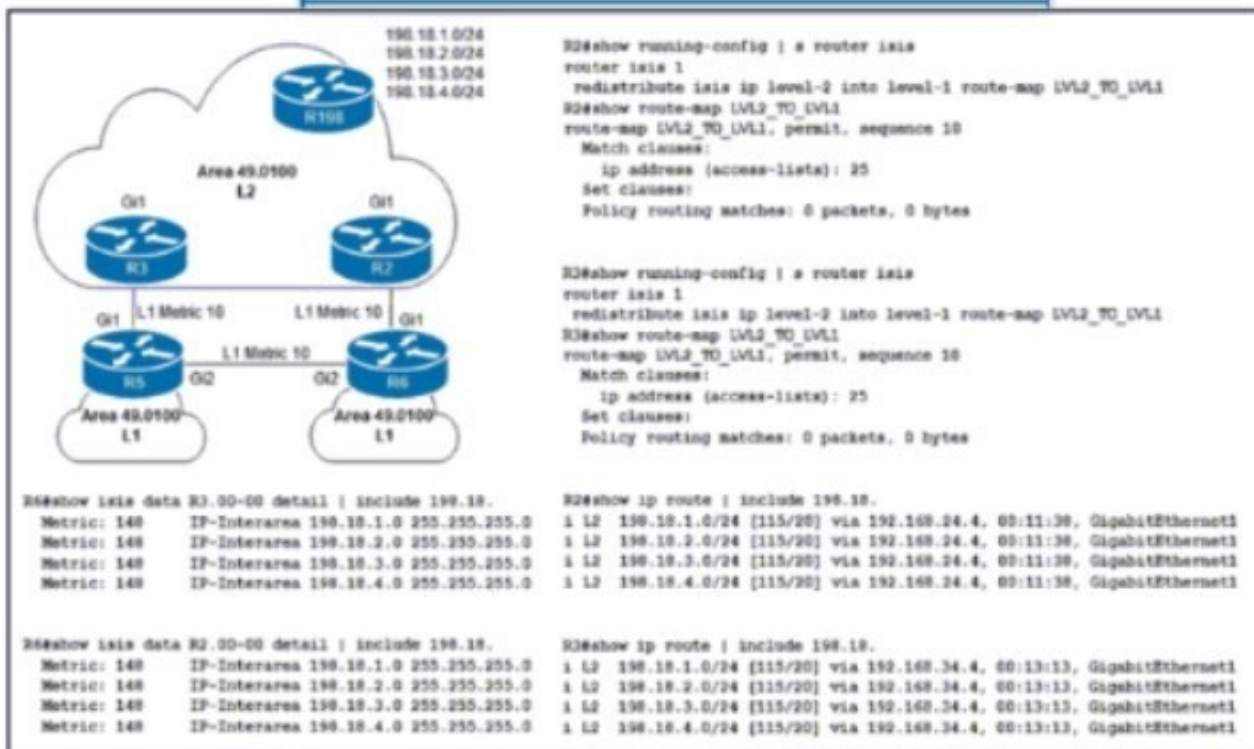
An engineer has started to configure a router for secure remote access as shown. All users who require network access need to be authenticated by the SSH protocol. Which two actions must the engineer implement to complete the SSH configuration? (Choose two.)

- A. Configure an IP domain name.
- B. Configure ACL 100 to permit access to port 22.
- C. Configure a password under the vty lines.
- D. Configure crypto keys.
- E. Configure service password encryption.

Correct Answer: AD

QUESTION 10

Refer to the exhibit.



Routers R2 and R3 are Level 1/Level 2 IS-IS routers that redistribute 198.18.x/24 prefixes to routers R5 and R6. In the Level 1 area, R2 is to be the preferred router for all redistributed prefixes. Which configuration sets this preference?

- On R2:
configure terminal
route-map LVL2_TO_LVL1 permit 10
set metric 5
end
- On R2:
configure terminal
route-map LVL2_TO_LVL1 permit 10
set metric 25
end
- On R3:
configure terminal
route-map LVL2_TO_LVL1 permit 10
set metric 5
end
- On R3:
configure terminal
route-map LVL2_TO_LVL1 permit 10
set metric 25
end

A. Option A

B. Option B

C. Option C

D. Option D

Correct Answer: A

QUESTION 11

What are two factors to consider when implementing NSR High Availability on an MPLS PE router? (Choose two.)

A. It consumes more memory and CPU resources than NSF

B. It operates normally without NSR support on the PE peers.

C. It requires all PE-CE sessions to support NSR

D. It requires routing protocol extensions

E. It cannot sync state information across redundant RPs

Correct Answer: AB

QUESTION 12

A service provider has a requirement to deliver WAN gateway functionality to multi-tenant, provider-hosted clouds. Which Cisco platform meets this requirement?

A. Cisco ASR 9000 series

B. Cisco NX-OS

C. Cisco ASR 1000 Series

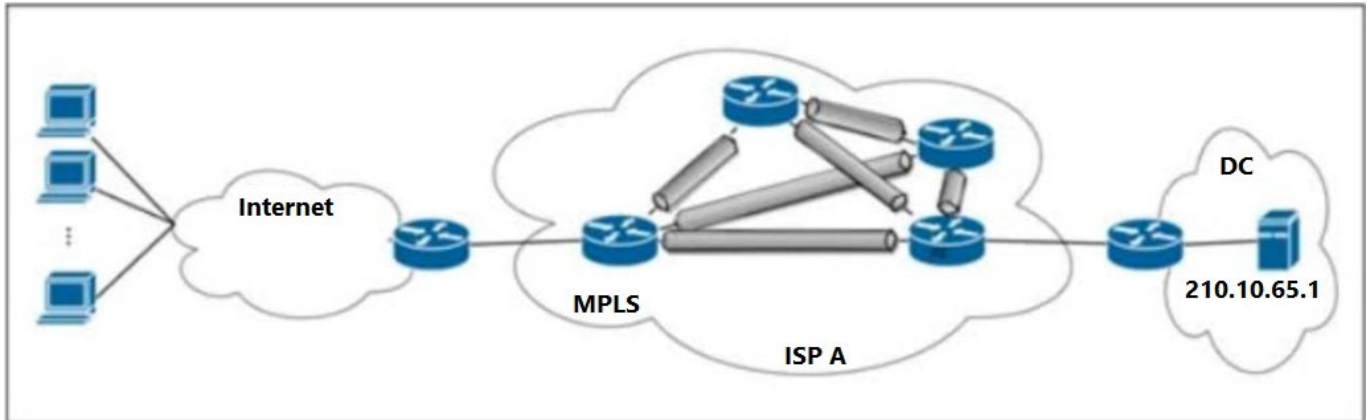
D. Cisco CSR 1000v

E. Cisco CRS series

Correct Answer: D

QUESTION 13

Refer to the exhibit.



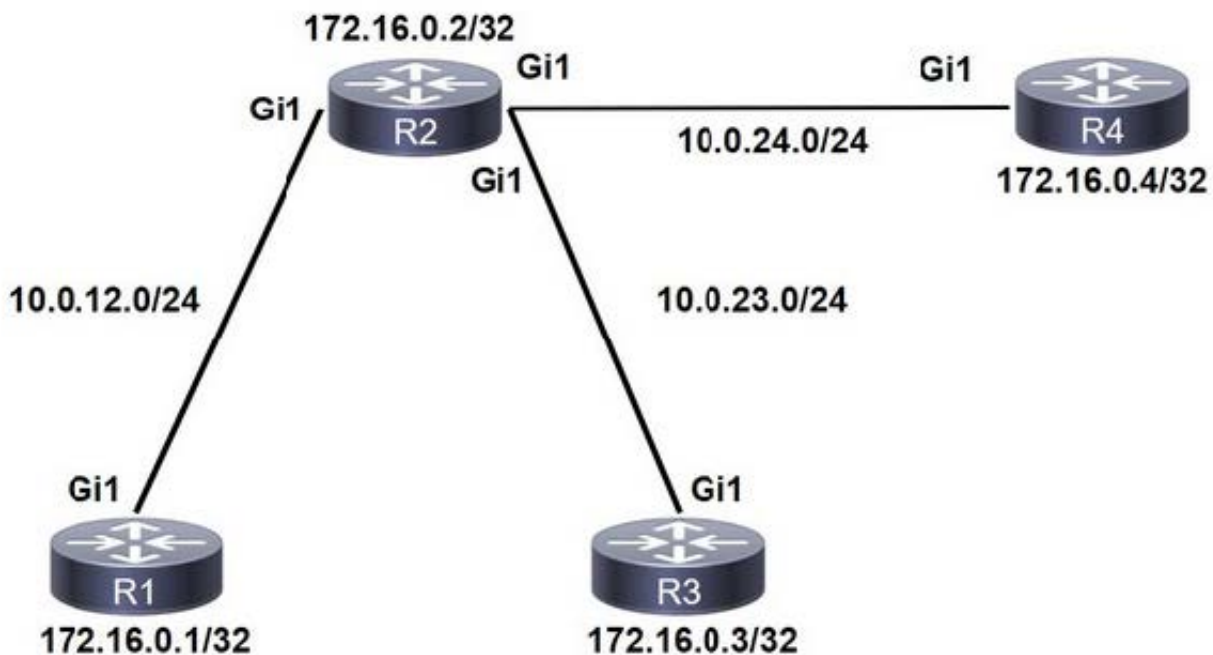
ISP A provides VPLS services and DDoS protection to Company XYZ to connect their branches across the North America and Europe regions. The uplink from the data center to the ISP is 100 Mbps. The Company XYZ security team asked the ISP to redirect ICMP echo requests, which are currently going to the web server, to a new local security appliance. Which configuration must an ISP engineer apply to router R2 to redirect the ICMP traffic?

- A. `class-map type traffic match-all B_210.10.65.1 match destination-address ipv4 210.10.65.1 match protocol 7 match ipv4 icmp-type 3`
- B. `class-map type traffic match-all B_210.10.65.1 match destination-address ipv4 210.10.65.1 match protocol 1 match ipv4 icmp-type 8`
- C. `class-map type traffic match-all B_210.10.65.1 match destination-address ipv4 210.10.65.1 match protocol 3 match ipv4 icmp-type 5`
- D. `class-map type traffic match-all B_210.10.65.1 match destination-address ipv4 210.10.65.1 match protocol 6 match ipv4 icmp-type 9`

Correct Answer: B

QUESTION 14

Refer to the exhibit.



Which configuration must be applied to each of the four routers on the network to reduce LDP LIB size and advertise label bindings for the /32 loopback IP space only?

- A. `config t ip prefix-list LOOPBACKS seq 5 permit 0.0.0.0/0 le 32 mpls ldp label allocate global prefix-list LOOPBACKS end`
- B. `config t access-list 10 permit 172.16.0.0 0.0.0.7 access-list 20 permit 10.0.0.0 0.0.31.255 no mpls ldp advertise-labels mpls ldp advertise-labels for 10 to 20 end`
- C. `config t access-list 10 permit 172.16.0.0 0.0.0.7 access-list 20 permit 172.16.0.0 0.0.0.7 no mpls ldp advertise-labels mpls ldp advertise-labels for 10 to 20 end`
- D. `config t mpls ldp label allocate global host-routes end`

Correct Answer: A

QUESTION 15

Refer to the exhibit.



What does this value mean when it is received in XML?

- A. It indicates a value assigned by a network administrator to tag a route.
- B. It indicates a break in a sequence.
- C. It means a data field is blank.

D. It shows the ending of the script.

Correct Answer: C

[350-501 VCE Dumps](#)

[350-501 Study Guide](#)

[350-501 Exam Questions](#)